

5/28/2026 2:33:27 PM

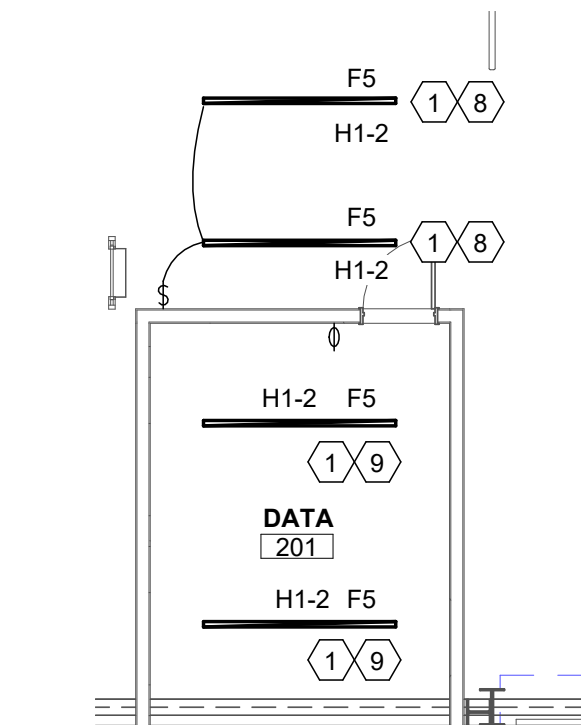
1 1ST FLOOR LIGHTING PLAN
3/32" = 1'-0"

LIGHTING KEYNOTES:

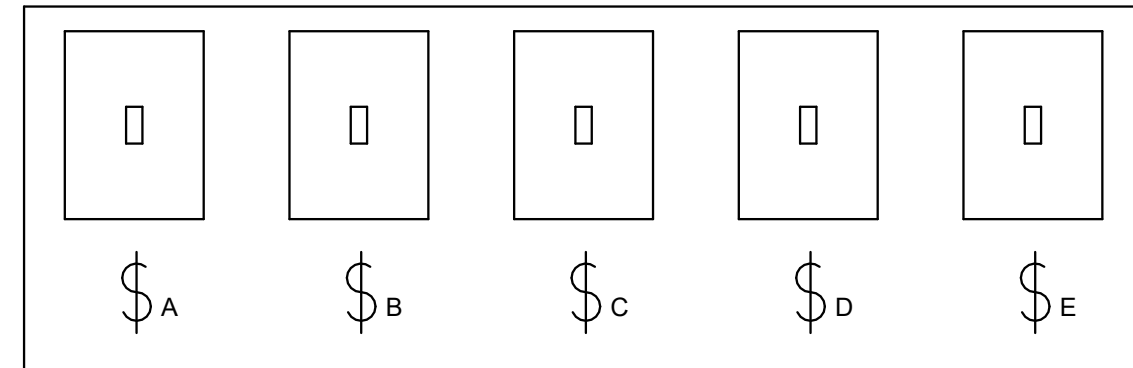
- COORDINATE LIGHT FIXTURE LOCATIONS WITH MECHANICAL CONTRACTOR TO AVOID CONFLICTS WITH DUCTWORK, HVLS FANS, AND EQUIPMENT PRIOR TO ROUGH-IN. TYPICAL THIS FIXTURE TYPE.
- CONTROLLED BY PHOTOCELL / TIMECLOCK COMBINATION VIA NLIGHT RELAY PANEL MOUNTED ADJACENT ELECTRICAL PANEL. TYPICAL THIS FIXTURE TYPE.
- MOUNT EXTERIOR FIXTURE AT APPROX. 10' AFF. COORDINATE HEIGHT WITH EXTERIOR CANOPIES. VERIFY ALL EXACT FIXTURE HEIGHTS WITH ARCHITECT PRIOR TO ROUGH-IN. TYPICAL THIS FIXTURE TYPE.
- SUSPEND FIXTURE SO THAT BOTTOM OF FIXTURE IS 20' AFF. VERIFY ALL EXACT FIXTURE HEIGHTS WITH ARCHITECT PRIOR TO ROUGH-IN. TYPICAL THIS FIXTURE TYPE.
- CENTRALLY CONTROLLED SPACE. PROVIDE NLIGHT POWER PACK AND ALL NECESSARY COMPONENTS / LOW VOLTAGE CABLING TO INTERFACE WITH NLIGHT ECLYPSE HEAD END. SUBSCRIPT INDICATES CONTROL ZONE. FIXTURES TO BE CONTROLLED BY ROW.
- NLIGHT ARP INTENC16 NLT RELAY PANEL.
- FIXTURE TYPE "F5" THIS SPACE TO BE SURFACE MOUNTED.
- SUSPEND FIXTURE 36" BELOW CEILING. VERIFY ALL EXACT FIXTURE HEIGHTS WITH ARCHITECT PRIOR TO ROUGH-IN.
- SUSPEND FIXTURE SO THAT BOTTOM OF FIXTURE IS 7'-6" AFF. VERIFY ALL EXACT FIXTURE HEIGHTS WITH ARCHITECT PRIOR TO ROUGH-IN.
- FOR LOCAL CONTROL OF SHOP LIGHTING. SEE DETAIL THIS SHEET.

LIGHTING GENERAL NOTES:

- COLOR TEMP OF ALL LIGHTING FIXTURES TO BE 4000K CCT UNLESS NOTED OTHERWISE.
- FIXTURE FINISH DETERMINED BY ARCHITECT DURING SHOP DRAWINGS. INCLUDE COST FOR CUSTOM COLOR WHERE STANDARD OPTIONS ARE LIMITED.
- ALL LIGHTING CONTROLS SHALL MEET OR EXCEED REQUIREMENTS AS SET FORTH IN IECC 2021 SECTION C405.
- SUBSCRIPTS AT LIGHT FIXTURE DESIGNATIONS DENOTE SWITCHING SCHEME.
- ALL EXIT SIGNS AND EMERG FLOODS TO BE UNSWITCHED.
- EXTERIOR LIGHTING TO BE CONTROLLED VIA PHOTOCELL / TIMECLOCK COMBINATION VIA NLIGHT ARP INTENC16 NLT RELAY PANEL.
- PROVIDE ADDITIONAL UNSWITCHED CONDUCTOR TO BATTERY OF FIXTURE. TYPICAL OF TYPES ENDING WITH "E". PROVIDE ALL COMPONENTS NECESSARY TO OPERATE WITH CONTROLS AS NOTED UNDER NORMAL POWER.



3 2ND FLOOR LIGHTING PLAN -STORAGE 201
1/8" = 1'-0"

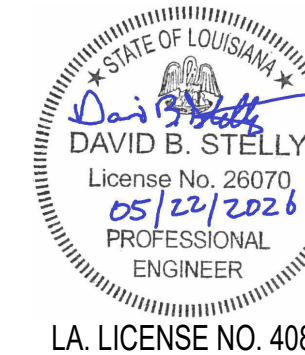


4 SHOP LIGHT DETAIL
N.T.S.



ASSOCIATED DESIGN GROUP, INC.
3909 West Congress Street, Suite 201
Lafayette, Louisiana 70506
Phone: (337) 234-5710
Email: adginc@adginc.org

Project No. 25326



NEW CONSTRUCTION
FOR
FORD PRO
MIKE WILLIS
2010 PATTON ST.

© COPYRIGHT 2019,
RANDY M. GOODLOE, A.I.A. APAC
ALL INFORMATION, EITHER DRAWN, WRITTEN,
OR IMPLIED APPEARING IN THIS DOCUMENT
SHALL NOT BE DUPLICATED, DISCLOSED, OR
OTHERWISE USED WITHOUT THE WRITTEN
PERMISSION OF THE AUTHOR, RANDY M.
GOODLOE, AIA APAC. THIS DOCUMENT IS AN
INSTRUMENT OF SERVICE AND IS THE SOLE
PROPERTY OF THE AUTHOR. FURTHERMORE,
THE USE OF THIS DOCUMENT FOR ANY
PURPOSE SHALL BE REVOKED, IF THE INTENT
OF THE DESIGN OR THE CONSTRUCTION
TECHNIQUES OR DETAILS SHOWN HEREIN
ARE NOT ADHERED TO OR THE
CONTRACTUAL AGREEMENT GOVERNING
THEIR USE ARE NOT STRICTLY ADHERED TO.

PROJECT NO.

25012

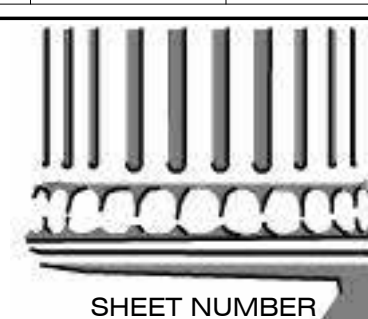
PROJECT MANAGER

TM

DATE ISSUED

2026.05.22

REVISED



SHEET NUMBER

E-101
1ST FLOOR LIGHTING
PLAN